



**PRODUCTS USED:**

**JET BLACK GEL EYELINER**

**SWEET PLUM, MOONSTONE & COAL MINERAL EYE COLORS**

**LASH PRIMER**

**ULTIMATE MASCARA IN BLACK**

**SHY BLUSH MINERAL CHEEK COLOR**

**NOURISHINE PLUS LIP GLOSS IN CAFÉ AU LAIT**

**MARY KAY PROFESSIONAL BRUSH SET**

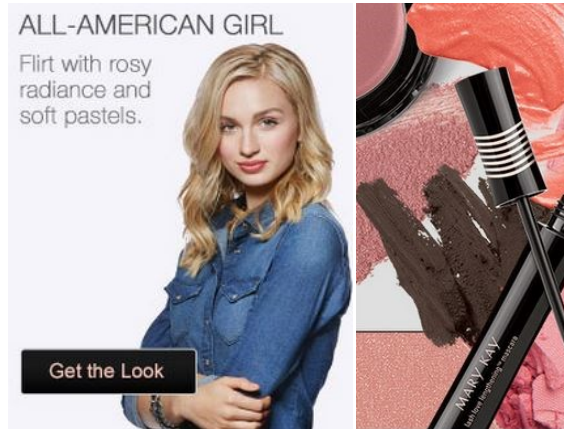
**MARY KAY SMUDGE BRUSH**

**Step 1:** Line top and bottom lashlines with Jet Black gel eyeliner and smudge. Apply Sweet Plum mineral eye color from the lashlines to the creases and along the lower lashlines. Apply Moonstone mineral eye color to the creases and blend using the eye crease brush. Apply Coal mineral eye color to the top and bottom lashlines and smudge.

**Step 2:** Sweep on lash primer followed by 2 coats of Ultimate Mascara in Black on top and bottom lashes

**Step 3:** Add a soft wash of Shy Blush mineral cheek color along cheekbones

**Step 4:** For the final touch of red carpet glam, apply Nourishine Plus Lip Gloss in Café Au Lait



**PRODUCTS USED:**

**PALE BLUSH CREAM EYE COLOR**

**PRECIOUS PINK MINERAL EYE COLORS**

**MARY KAY EYE LINER IN DEEP BROWN**

**LASH LOVE MASCARA IN BLACK**

**STRAWBERRY CREAM MINERAL CHEEK COLOR**

**NOURISHINE PLUS LIP GLOSS IN FANCY NANCY**

**MARY KAY PROFESSIONAL BRUSH SET**

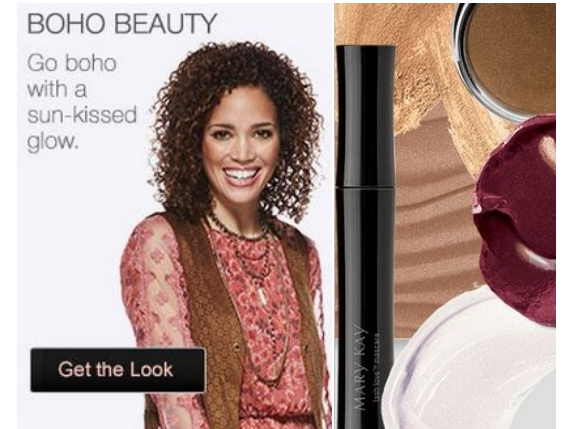
**MARY KAY SMUDGE BRUSH**

**Step 1:** Apply Pale Blush cream eye color all over the eyelids. Apply Precious Pink mineral eye color along upper and lower lashlines and blend. Line upper and lower lashlines with Mary Kay® Eyeliner Deep Brown and smudge.

**Step 2:** Brush on two coats of Lash Love® Lengthening™ Mascara in I ♥ black.

**Step 3:** For a cheeky glow, sweep Strawberry Cream mineral cheek color to the apples of the cheeks.

**Step 4:** Top lips with Nourishine Plus® Lip Gloss in Fancy Nancy.



**PRODUCTS USED:**

**APRICOT TWIST & ICED COCOA CREAM EYE COLOR**

**MARY KAY EYE LINER IN DEEP BROWN**

**LASH LOVE MASCARA IN BLACK**

**LIGHT-MEDIUM BRONZING POWDER**

**TRUE DIMENSIONS BERRY A LA MODE**

**NOURISHINE PLUS LIP GLOSS IN SILVER MOON**

**MARY KAY PROFESSIONAL BRUSH SET**

**MARY KAY SMUDGE BRUSH**

**Step 1:** Apply Apricot Twist cream eye color all over the eyelids. Apply Iced Cocoa cream eye color along upper and lower lashlines. Line upper and lower lashlines with Mary Kay® Deep Brown eyeliner and smudge using the eye smudger brush.

**Step 2:** Sweep on two coats of Lash Love® Mascara in I ♥ black.

**Step 3:** Apply Light-Medium bronzing powder to the cheekbones, temples and jawline, applying what's left on the brush to the apples of the cheeks.

**Step 4:** Finish the look with True Dimensions® Lipstick in Berry a la Mode and Nourishine Plus® Lip Gloss in Silver Moon for a crushed berry, bitten lip look.