

# Fairytales

# & Fantasy



## COLOR 101

Create spell-binding looks in glowing gold and warm neutrals and kissable lips in pink...



Check my website for more incredible products.

www.marykay.com: \_\_\_\_\_

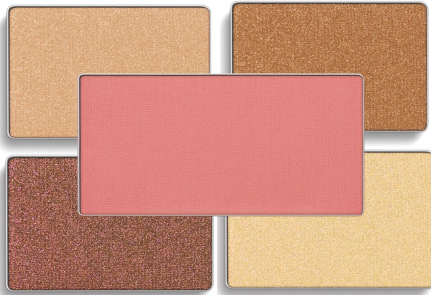
*Before*

3 X 5  
VERTICAL PHOTOS  
WORK BEST

*After*

3 X 5  
VERTICAL PHOTOS  
WORK BEST

## Golden Glamour



Dazzle with a smoldering eye  
and perfect red lip

**EYES:** Honey Spice, Amber Blaze, Copper Glow  
and Gold Coast Mineral Eye Colors  
Black Eyeliner (or try liquid black)  
Lash Love Mascara in I ♥ Black

**CHEEK:** Citrus Bloom Mineral Cheek Color

**LIPS:** Neutral Lip Liner  
Firecracker True Dimensions Lipstick



MODEL NAME \_\_\_\_\_

OCCUPATION \_\_\_\_\_

PHONE \_\_\_\_\_ Home

\_\_\_\_\_ Work

\_\_\_\_\_ Cell

BEST TIME TO CALL \_\_\_\_\_

Email \_\_\_\_\_

HAIR COLOR \_\_\_\_\_

EYE COLOR \_\_\_\_\_

SKIN TYPE: combination ~ oily ~ dry

MY FAVORITE MARY KAY PRODUCTS

\_\_\_\_\_

\_\_\_\_\_

*Before*

3 X 5  
VERTICAL PHOTOS  
WORK BEST

*After*

3 X 5  
VERTICAL PHOTOS  
WORK BEST

## Storybook Romance



Enchant in soft neutrals and an alluring lip look

MODEL NAME \_\_\_\_\_

OCCUPATION \_\_\_\_\_

PHONE \_\_\_\_\_ Home

\_\_\_\_\_ Work

\_\_\_\_\_ Cell

BEST TIME TO CALL \_\_\_\_\_

Email \_\_\_\_\_

HAIR COLOR \_\_\_\_\_

EYE COLOR \_\_\_\_\_

SKIN TYPE: combination ~ oily ~ dry

MY FAVORITE MARY KAY PRODUCTS

**EYES:** Lavender Fog, Granite, Crystalline  
and Truffle Mineral Eye Colors  
Violet Ink Eyeliner  
Lash Love Mascara in I ♥ Black

**CHEEK:** Strawberry Cream Mineral Cheek Color

**LIPS:** Pink Passion Crème Lipstick  
Soft Blush Lip Liner  
Pink Parfait Lip Gloss



*Before*

3 X 5  
VERTICAL PHOTOS  
WORK BEST

*After*

3 X 5  
VERTICAL PHOTOS  
WORK BEST

## Timeless Elegance



Subtle and sophisticated,  
this look is perfect for day or evening

MODEL NAME \_\_\_\_\_

OCCUPATION \_\_\_\_\_

PHONE \_\_\_\_\_ Home

\_\_\_\_\_ Work

\_\_\_\_\_ Cell

BEST TIME TO CALL \_\_\_\_\_

Email \_\_\_\_\_

HAIR COLOR \_\_\_\_\_

EYE COLOR \_\_\_\_\_

SKIN TYPE: combination ~ oily ~ dry

MY FAVORITE MARY KAY PRODUCTS

\_\_\_\_\_  
\_\_\_\_\_

**EYES:** Spun Silk Mineral Eye Color  
Granite Mineral Eye Color  
Bronze Eyeliner  
Lash Love Mascara in I ♥ Brown

**CHEEK:** Sunny Spice Mineral Cheek Color

**LIPS:** Neutral Lip Liner  
Pink Chérie True Dimensions Lipstick



*Before*

3 X 5  
VERTICAL PHOTOS  
WORK BEST

*After*

3 X 5  
VERTICAL PHOTOS  
WORK BEST

## Evening Mystery



Take center stage with a smoky eye and red lips dramatic

**EYES:** Beach Blonde Cream Eye Color  
Coal Mineral Eye Color  
Midnight Star Mineral Eye Color  
Black Eyeliner  
Ultimate Mascara in Black

**CHEEK:** Golden Copper Mineral Cheek Color

**LIPS:** Plum Lip Liner  
Sizzling Red True Dimensions Lipstick  
Red Passion Lip Gloss



MODEL NAME \_\_\_\_\_

OCCUPATION \_\_\_\_\_

PHONE \_\_\_\_\_ Home

\_\_\_\_\_ Work

\_\_\_\_\_ Cell

BEST TIME TO CALL \_\_\_\_\_

Email \_\_\_\_\_

HAIR COLOR \_\_\_\_\_

EYE COLOR \_\_\_\_\_

SKIN TYPE: combination ~ oily ~ dry

MY FAVORITE MARY KAY PRODUCTS

\_\_\_\_\_  
\_\_\_\_\_

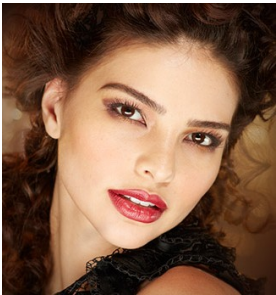
*Before*

3 X 5  
VERTICAL PHOTOS  
WORK BEST

*After*

3 X 5  
VERTICAL PHOTOS  
WORK BEST

## Autumn Allure



Captivate in an alluring look  
of plums and berries

MODEL NAME \_\_\_\_\_

OCCUPATION \_\_\_\_\_

PHONE \_\_\_\_\_ Home

\_\_\_\_\_ Work

\_\_\_\_\_ Cell

BEST TIME TO CALL \_\_\_\_\_

Email \_\_\_\_\_

**EYES:** Honey Spice Mineral Eye Color  
Sweet Plum Mineral Eye Color  
Amber Blaze Mineral Eye Color  
Lash Love Mascara in I ♥ Black

**CHEEK:** Sunny Spice Mineral Cheek Color

**LIPS:** Plum Lip Liner  
Whipped Berries Crème Lipstick  
Beach Bronze Lip Gloss



HAIR COLOR \_\_\_\_\_

EYE COLOR \_\_\_\_\_

SKIN TYPE: combination ~ oily ~ dry

MY FAVORITE MARY KAY PRODUCTS

\_\_\_\_\_  
\_\_\_\_\_

*Before*

3 X 5  
VERTICAL PHOTOS  
WORK BEST

*After*

3 X 5  
VERTICAL PHOTOS  
WORK BEST

## Smoky Fantasy Eyes



MODEL NAME \_\_\_\_\_

OCCUPATION \_\_\_\_\_

PHONE \_\_\_\_\_ Home

\_\_\_\_\_ Work

\_\_\_\_\_ Cell

BEST TIME TO CALL \_\_\_\_\_

Email \_\_\_\_\_

HAIR COLOR \_\_\_\_\_

EYE COLOR \_\_\_\_\_

SKIN TYPE: combination ~ oily ~ dry

MY FAVORITE MARY KAY PRODUCTS

\_\_\_\_\_  
\_\_\_\_\_

Get this enchanting look with rich new shades from the latest trends

**EYES:** Honey Spice Mineral Eye Color  
Midnight Star Mineral Eye Color  
Iris Mineral Eye Color  
Amethyst Smoke Eye Wand  
Black Eyeliner  
Lash Love Mascara in I © Black

**CHEEK:** Dark Cherry & Cherry Blossom  
Mineral Cheek Colors

**LIPS:** Chocolate Lip Liner  
Mulberry Forest Glossy Lip Stain



# Color 101 Portfolio—Information Sheet

<u>Customer Name</u>	<u>Phone</u>	<u>Email</u>	<u>Book Date</u>	<u>Color Preferences</u>
1				
2				
3				
4				
5				
6				
7				
8				
9				
10				
11				
12				
13				
14				
15				
16				
17				
18				
19				
20				
21				
22				
23				
24				
25				