

# *Makeup Artist Looks*

*Thirteen Ideas*

# *Model Portfolio*

Get on trend and look beautiful this fall... with  
looks perfect for day and evening...  
and any occasion...



Autumn Allure



Evening Mystery



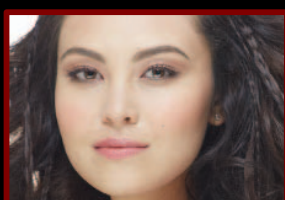
Fairytale Gaze



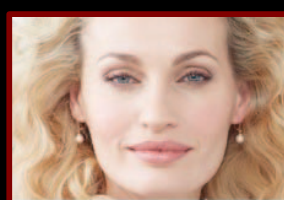
Golden Glamour



Smokey Fantasy Eyes



Storybook Romance



Timeless Elegance



Luminous



5 Minute Face



Everyday



Special Occasion



Daytime Bridal



Evening Bridal

**Before**  
3" X 5" works best

**After**  
3" X 5" works best

Captivate in an alluring look of plums and berries.

**FOR EYES:**

Dust **Honey Spice mineral eye color** all over the eyelids.

Apply **Sweet Plum mineral eye color** across eyelids and into the creases, then blend along upper lashlines and into outer corners of the eyes, continuing under the lower lashlines.

Add a touch of **Amber Blaze mineral eye color** at the centers of the lower lashlines.

Apply several coats of **Mary Kay® Lash Love® Mascara in I ♥ Black**.

**FOR CHEEKS:**

Using a circular motion, sweep **Sunny Spice mineral cheek color** onto the apples of the cheeks.

**FOR LIPS:**

Line lips with **Plum lip liner**.

Apply **Whipped Berries creme lipstick**, then add **Beach Bronze lip gloss** on top.

**The Autumn Allure Look**

MODEL NAME \_\_\_\_\_

OCCUPATION \_\_\_\_\_

PHONE \_\_\_\_\_ HOME  
\_\_\_\_\_ WORK  
\_\_\_\_\_ CELL

BEST TIME TO CALL \_\_\_\_\_

Email \_\_\_\_\_

HAIR COLOR \_\_\_\_\_

EYE COLOR \_\_\_\_\_

SKIN TYPE: combination - oily - dry

**Before**

3" X 5" works best

**After**

3" X 5" works best

Take center stage with a smoky eye and dramatic red lip.

**FOR EYES:**

Apply **Beach Blonde cream eye color** all over eye areas.

Dust **Coal mineral eye color** onto lids and into creases.

Brush **Midnight Star mineral eye color** along lower lashlines.

Line upper lashlines with **Black eyeliner**.

Sweep on several coats of **Mary Kay® Ultimate Mascara™ in Black**.

**FOR CHEEKS:**

Using a circular motion, apply **Golden Copper mineral cheek color** to apples of the cheeks.

**FOR LIPS:**

Line lips with **Plum lip liner**.

Apply **Mary Kay® True Dimensions™ Lipstick in Sizzling Red**.

Highlight centers of upper and lower lips with **Red Passion lip gloss**.

**The Evening Mystery Look**

MODEL NAME \_\_\_\_\_

OCCUPATION \_\_\_\_\_

PHONE \_\_\_\_\_ HOME  
\_\_\_\_\_ WORK  
\_\_\_\_\_ CELL

BEST TIME TO CALL \_\_\_\_\_

Email \_\_\_\_\_

HAIR COLOR \_\_\_\_\_

EYE COLOR \_\_\_\_\_

SKIN TYPE: combination - oily - dry

**Before**

3" X 5" works best

**After**

3" X 5" works best

This ethereal look with airy golden highlights whispers romance.

**FOR EYES:**

Apply NEW limited-edition **Mary Kay® Smoke & Shimmer Eye Wand in Golden Illusion** to top lashlines and blend. Sweep on **Moonstone mineral eye color** all over eyelids. Apply **Gold Coast mineral eye color** on eyelids extending up into creases. Lightly apply NEW limited-edition **Mary Kay® Smoke & Shimmer Eye Wand in Enchanted Mauve** to creases and blend well for depth.

Broadly line bottom lashlines with NEW limited-edition **Mary Kay® Kohl Eyeliner in Golden Illusion** and blend.

Sweep on **Mary Kay® Lash Love® Mascara in I ♥ Black**.

**FOR CHEEKS:**

Apply **Sheer Bliss cream blush** to the apples of the cheeks.

**FOR LIPS:**

Line lips with **Soft Blush lip liner**, then apply NEW limited-edition **Mary Kay® Glossy Lip Stain in Enchanted Mauve**.

**The Fairytale Gaze Look**

MODEL NAME \_\_\_\_\_

OCCUPATION \_\_\_\_\_

PHONE \_\_\_\_\_ HOME  
\_\_\_\_\_ WORK  
\_\_\_\_\_ CELL

BEST TIME TO CALL \_\_\_\_\_

Email \_\_\_\_\_

HAIR COLOR \_\_\_\_\_

EYE COLOR \_\_\_\_\_

SKIN TYPE: combination - oily - dry

**Before**

3" X 5" works best

**After**

3" X 5" works best

Dazzle with a smoldering eye and perfect red lip.

**FOR EYES:**

Apply **Honey Spice mineral eye color** all over lids and up to brow bones. Blend **Amber Blaze mineral eye color** and **Copper Glow mineral eye color** into creases. Sweep **Gold Coast mineral eye color** under brow bones to highlight.

Line eyes with **Black eyeliner**. Extend line up and out for a winged effect. For added drama, try **Black liquid eyeliner**.

Sweep on several coats of **Mary Kay® Lash Love® Mascara in I ♥ Black**.

**FOR CHEEKS:**

Sweep **Citrus Bloom mineral cheek color** onto the apples of the cheeks.

**FOR LIPS:**

Line lips with **Neutral lip liner**. Apply **Mary Kay® True Dimensions™ Lipstick in Firecracker**, building up color until desired intensity is reached, blotting after each application.

**The Golden Glamour Look**

MODEL NAME \_\_\_\_\_

OCCUPATION \_\_\_\_\_

PHONE \_\_\_\_\_ HOME  
\_\_\_\_\_ WORK  
\_\_\_\_\_ CELL

BEST TIME TO CALL \_\_\_\_\_

Email \_\_\_\_\_

HAIR COLOR \_\_\_\_\_

EYE COLOR \_\_\_\_\_

SKIN TYPE: combination - oily - dry

**Before**

3" X 5" works best

**After**

3" X 5" works best

This look is enchanting - the latest trend.

**FOR EYES:**

Apply **Mary Kay® Mineral Eye Color in Honey Spice** from lashlines to brows. Then apply **Mary Kay® Mineral Eye Color in Iris** on the eyelids up to the eye creases and also under the lower lashes. Brush **Mary Kay® Mineral Eye Color in Coal** on the outer creases of the eyes and blend.

Apply NEW limited-edition **Mary Kay® Smoke & Shimmer Eye Wand in Amethyst Smoke** from the top lashlines to above the creases, coloring to the outer corners. Blend well.

Line eyes with **Black eyeliner**. Sweep on **Mary Kay® Lash Love® Mascara in I ♥ black**.

**FOR CHEEKS:**

Apply **Dark Cherry mineral cheek color** over **Cherry Blossom mineral cheek color** for a striking effect.

**FOR LIPS:**

Line lips with **Chocolate lip liner**. Then apply NEW limited-edition **Mary Kay® Glossy Lip Stain in Mulberry Forest**.

**The Smoky Fantasy Eyes Look**

MODEL NAME \_\_\_\_\_

OCCUPATION \_\_\_\_\_

PHONE \_\_\_\_\_ HOME  
\_\_\_\_\_ WORK  
\_\_\_\_\_ CELL

BEST TIME TO CALL \_\_\_\_\_

Email \_\_\_\_\_

HAIR COLOR \_\_\_\_\_

EYE COLOR \_\_\_\_\_

SKIN TYPE: combination - oily - dry

**Before**

3" X 5" works best

**After**

3" X 5" works best

Enchant in soft neutrals and an alluring lip look.

**FOR EYES:**

Sweep on **Lavender Fog mineral eye color** all over eyelids. Apply **Granite mineral eye color** to creases and blend well. Dust **Crystalline mineral eye color** into the corners of the eyes.

Line upper lashlines with **Truffle mineral eye color**, then apply **Violet Ink eyeliner** and blend.

Brush on **Mary Kay® Lash Love® Lengthening™ Mascara in I ♥ Black**.

**FOR CHEEKS:**

Using a circular motion, apply **Strawberry Cream mineral cheek color** on the apples of the cheeks.

**FOR LIPS:**

Line lips with **Soft Blush lip liner**. Apply **Pink Passion creme lipstick**. Finish with **Pink Parfait lip gloss**.

**The Storybook Romance Look**

MODEL NAME \_\_\_\_\_

OCCUPATION \_\_\_\_\_

PHONE \_\_\_\_\_ HOME  
\_\_\_\_\_ WORK  
\_\_\_\_\_ CELL

BEST TIME TO CALL \_\_\_\_\_

Email \_\_\_\_\_

HAIR COLOR \_\_\_\_\_

EYE COLOR \_\_\_\_\_

SKIN TYPE: combination - oily - dry

**Before**

3" X 5" works best

**After**

3" X 5" works best

Subtle and sophisticated, this look is perfect for day or evening.

**FOR EYES:**

Apply **Spun Silk mineral eye color** all over eye areas.

Then sweep **Granite mineral eye color** into the creases and along the lower lashlines.

Line top lashlines with **Bronze eyeliner**.

Sweep on **Mary Kay® Lash Love® Mascara in I ♥ Brown**.

**FOR CHEEKS:**

Apply **Sunny Spice mineral cheek color** to the apples of the cheeks.

**FOR LIPS:**

Line lips with **Neutral lip liner**.

Apply **Mary Kay® True Dimensions™ Lipstick in Pink Chérie**.

**The Timeless Elegance**

MODEL NAME \_\_\_\_\_

OCCUPATION \_\_\_\_\_

PHONE \_\_\_\_\_ HOME  
\_\_\_\_\_ WORK  
\_\_\_\_\_ CELL

BEST TIME TO CALL \_\_\_\_\_

Email \_\_\_\_\_

HAIR COLOR \_\_\_\_\_

EYE COLOR \_\_\_\_\_

SKIN TYPE: combination - oily - dry



**Before**

3" X 5" works best

**After**

3" X 5" works best

Illuminate all your best features with a simple, glowing look created by Global Makeup Artist **Keiko Takagi**.

**FOR EYES:**

Apply **Moonstone mineral eye color** from lashlines to creases. Sweep on **Granite mineral eye color** in eye creases. Apply **Crystalline mineral eye color** to inside corners and brow bones. Blend all colors well.

Apply **Bronze eyeliner**.

Coat lashes with **Mary Kay® Ultimate Mascara™ in Black**.

**FOR CHEEKS:**

Dust **Crystalline mineral eye color** onto cheekbones, bridge of nose and the cupid's bow of the lip. Apply **Pink Porcelain mineral highlighting powder** along cheekbones.

Sweep **Desert Sun mineral bronzing powder** onto the temples and hollows of the cheeks.

**FOR LIPS:**

Apply **Pink Passion creme lipstick**. Finish with **Cream and Sugar lip gloss** to the center of the lips.

**The Luminous Look**

MODEL NAME \_\_\_\_\_

OCCUPATION \_\_\_\_\_

PHONE \_\_\_\_\_ HOME  
\_\_\_\_\_ WORK  
\_\_\_\_\_ CELL

BEST TIME TO CALL \_\_\_\_\_

Email \_\_\_\_\_

HAIR COLOR \_\_\_\_\_

EYE COLOR \_\_\_\_\_

SKIN TYPE: combination - oily - dry

**Before**

3" X 5" works best

**After**

3" X 5" works best

Less time doesn't have to mean less fabulous. Five minutes is all you need to look and feel put together. Try this look created by Global Makeup Artist **Shawnelle Prestidge**.

**FOR FACE:**

Apply **Mary Kay® Facial Highlighting Pen** to the shadowy areas on the face in a shade that matches your skin tone. Dab on **concealer** where needed. Apply **Mary Kay® Creme-to-Powder Foundation** just to the areas that need extra coverage.

**FOR EYES:**

Sweep on **Chocolate Kiss mineral eye color** to the entire eyelids, from lashlines to the brow bones. Finish with a coat of **Mary Kay® Lash Love® Mascara** in I ♥ black.

**FOR CHEEKS:**

Dust **Shy Blush mineral cheek color** on the apples of the cheeks.

**FOR LIPS:**

Apply **Neutral lip liner** along the natural lip lines. Then, sweep on **Sunny Citrus creme lipstick**.

**The 5-Minute Face Look**

MODEL NAME \_\_\_\_\_

OCCUPATION \_\_\_\_\_

PHONE \_\_\_\_\_ HOME  
\_\_\_\_\_ WORK  
\_\_\_\_\_ CELL

BEST TIME TO CALL \_\_\_\_\_

Email \_\_\_\_\_

HAIR COLOR \_\_\_\_\_

EYE COLOR \_\_\_\_\_

SKIN TYPE: combination - oily - dry

**Before**

3" X 5" works best

**After**

3" X 5" works best

Mary Kay Global Makeup Artist **Gregg Brockington** shares an easy everyday look that works for any woman, anytime.

**FOR EYES:**

Apply **Truffle mineral eye color** to entire eyelids, blending from the lashlines up. Sweep on **Bronze eyeliner** to upper lashlines. Soften with a sponge-tip applicator or a brush.

Finish eyes with a coat of **Mary Kay® Lash Love® Mascara in I ♥ black** to top lashes only.

**FOR CHEEKS:**

Lightly dust **Desert Sun mineral bronzing powder** along cheekbones and temples of forehead for a contoured look. Then, apply **Strawberry Cream mineral cheek color** to the apples of the cheeks.

**FOR LIPS:**

Apply **Amber Glow creme lipstick**.

**EXTRA POP:**

For an extra pop of highlights, dust **Crystalline mineral eye color** to brow bones, across the centers of the eyelids, along the tops of the cheekbones and in the center above the upper lip.

**The Everyday Look**

MODEL NAME \_\_\_\_\_

OCCUPATION \_\_\_\_\_

PHONE \_\_\_\_\_ HOME  
\_\_\_\_\_ WORK  
\_\_\_\_\_ CELL

BEST TIME TO CALL \_\_\_\_\_

Email \_\_\_\_\_

HAIR COLOR \_\_\_\_\_

EYE COLOR \_\_\_\_\_

SKIN TYPE: combination - oily - dry

**Before**

3" X 5" works best

**After**

3" X 5" works best

Be beautifully prepared for the excitement and celebration of a special event with this glamorous look created by Global Makeup Artist **Gregg Brockington**.

**FOR EYES:**

Apply **Midnight Star mineral eye color** to entire eyelids and along lower lashlines. To create a dramatic, elongated eye effect, blend **Coal mineral eye color** along outer edges of eyes in a V-shape.

Apply **Black eyeliner** along lower lashlines and smudge with the **Eye Smudger Brush**. Add **Mary Kay® Ultimate Mascara™ in Black** to both lashlines.

**FOR CHEEKS:**

Contour cheeks with **Canyon Gold mineral bronzing powder** blended along the hollows of the cheekbones and lightly dust around the temples of the face. Swirl **Sparkling Cider mineral cheek color** on the apples of cheeks to add warmth.

**FOR LIPS:**

Line natural lip line with **Cappuccino lip liner** and blend edges with a lip brush or finger. Apply **Sunlit Sand creme lipstick**. Finish with **Icicle lip gloss**.

**The Special Occasion Look**

MODEL NAME \_\_\_\_\_

OCCUPATION \_\_\_\_\_

PHONE \_\_\_\_\_ HOME  
\_\_\_\_\_ WORK  
\_\_\_\_\_ CELL

BEST TIME TO CALL \_\_\_\_\_

Email \_\_\_\_\_

HAIR COLOR \_\_\_\_\_

EYE COLOR \_\_\_\_\_

SKIN TYPE: combination - oily - dry

**Before**

3" X 5" works best

**After**

3" X 5" works best

This look, created by Mary Kay Global Makeup Artist **Keiko Takagi**, accentuates a beautiful bride bathed in daytime sunshine.

**FOR EYES:**

Apply **Honey Spice mineral eye color** to entire eyelids. Sweep on **Espresso mineral eye color** along the lashlines, then blend from the lashlines to the creases. Use **Crystalline mineral eye color** as a highlighter on the brow bones and on the inner corners of the eyes.

Apply **Black eyeliner** and smudge with a sponge-tip applicator or the **Eye Smudger Brush**. Then, apply two coats of **Mary Kay® Lash Love® Waterproof Mascara in I ♥ black**.

**FOR CHEEKS:**

Apply **Sheer Bliss cream blush** to the apples of the cheeks. Blend **Strawberry Cream mineral cheek color** over cream blush. For extra highlight, add **Crystalline mineral eye color** to the tops of the cheekbones.

**FOR LIPS:**

Apply **Soft Blush lip liner** and **Pink Passion creme lipstick**. Finish with **Fancy Nancy lip gloss** to the center of the lips.

**The Daytime Bridal Look**

MODEL NAME \_\_\_\_\_

OCCUPATION \_\_\_\_\_

PHONE \_\_\_\_\_ HOME  
\_\_\_\_\_ WORK  
\_\_\_\_\_ CELL

BEST TIME TO CALL \_\_\_\_\_

Email \_\_\_\_\_

HAIR COLOR \_\_\_\_\_

EYE COLOR \_\_\_\_\_

SKIN TYPE: combination - oily - dry

**Before**

3" X 5" works best

**After**

3" X 5" works best

The elegance and enchantment of an evening wedding is celebrated in this beautifully sophisticated bridal look created by Global Makeup Artist **Keiko Takagi**.

**FOR EYES:**

Sweep **Spun Silk mineral eye color** onto entire eyelids. Apply **Sweet Plum mineral eye color** along the lashlines. Brush on **Crystalline mineral eye color** as a highlighter on the brow bones and inner corners of the eyes.

Apply **Black liquid eyeliner**.

Apply two coats of **Mary Kay® Lash Love® Waterproof Mascara in I ♥ black**.

**FOR CHEEKS:**

Apply **Cranberry cream blush** to the apples of the cheeks. Use **Pink Stardust mineral highlighting powder** as a highlighter along cheekbones.

**FOR LIPS:**

Apply **Clear lip liner** to natural lip lines. Then apply **Fuchsia creme lipstick**. Top with **Pink Parfait lip gloss**.

**The Evening Bridal Look**

MODEL NAME \_\_\_\_\_

OCCUPATION \_\_\_\_\_

PHONE \_\_\_\_\_ HOME  
\_\_\_\_\_ WORK  
\_\_\_\_\_ CELL

BEST TIME TO CALL \_\_\_\_\_

Email \_\_\_\_\_

HAIR COLOR \_\_\_\_\_

EYE COLOR \_\_\_\_\_

SKIN TYPE: combination - oily - dry