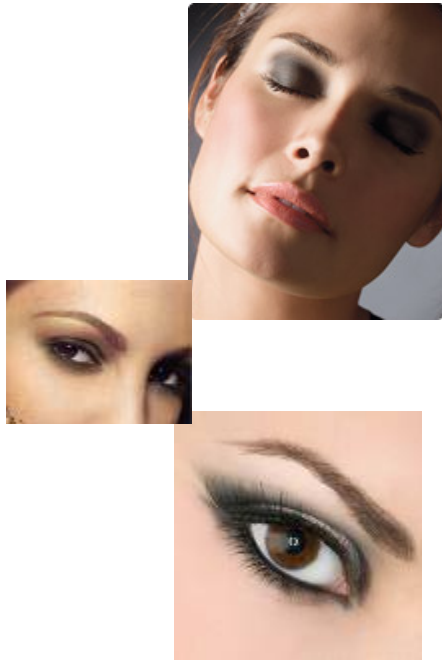


Smoky Eyes

Soft, smoky eyes look gorgeous against glowing, luminous skin and perfectly pouting lips. A great evening look that is best with a softer lip. Lip gloss really looks perfect with this eye look.

1. Highlighter shade: Apply to brow bone only.
2. Midtone shade: Start at the base of your upper lashline and bring the color up and over your entire lid - all the way up to your brow bone.
3. Accent shade: Again, start at the base of your lashline, layer the color over your midtone all the way across your lid and up into the crease. Now sweep the contour color underneath the lower lashline as well. You'll create a light-to-dark effect with the three eye shadows, with the darkest shade applied closest to the lashline and fading as you go towards the brow.
4. Eyeliner: Glide on along upper and lower lashline. Smudge with the midtone shade.
5. Mascara: Apply to several coats to upper lashes and lightly on lower lashes.

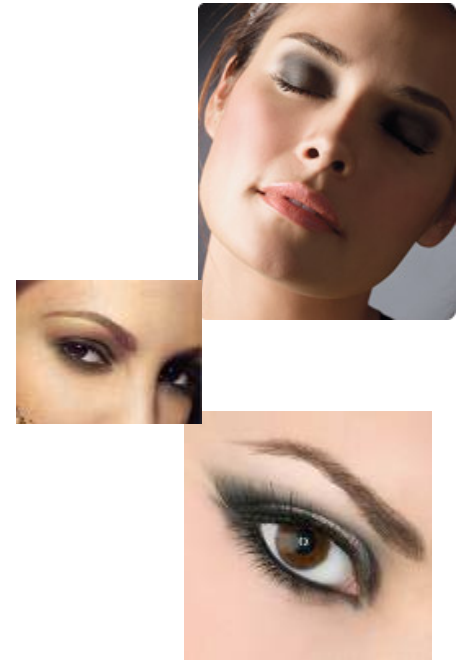


Created by Kellie Hammett, Ind. Sales Director

Smoky Eyes

Soft, smoky eyes look gorgeous against glowing, luminous skin and perfectly pouting lips. A great evening look that is best with a softer lip. Lip gloss really looks perfect with this eye look.

1. Highlighter shade: Apply to brow bone only.
2. Midtone shade: Start at the base of your upper lashline and bring the color up and over your entire lid - all the way up to your brow bone.
3. Accent shade: Again, start at the base of your lashline, layer the color over your midtone all the way across your lid and up into the crease. Now sweep the contour color underneath the lower lashline as well. You'll create a light-to-dark effect with the three eye shadows, with the darkest shade applied closest to the lashline and fading as you go towards the brow.
4. Eyeliner: Glide on along upper and lower lashline. Smudge with the midtone shade.
5. Mascara: Apply to several coats to upper lashes and lightly on lower lashes.

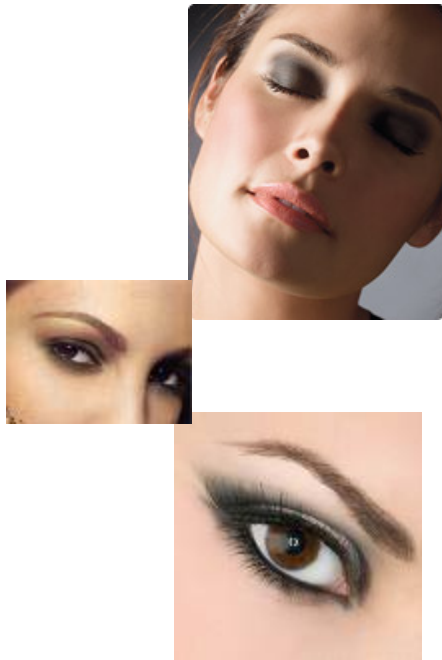


Created by Kellie Hammett, Ind. Sales Director

Smoky Eyes

Soft, smoky eyes look gorgeous against glowing, luminous skin and perfectly pouting lips. A great evening look that is best with a softer lip. Lip gloss really looks perfect with this eye look.

1. Highlighter shade: Apply to brow bone only.
2. Midtone shade: Start at the base of your upper lashline and bring the color up and over your entire lid - all the way up to your brow bone.
3. Accent shade: Again, start at the base of your lashline, layer the color over your midtone all the way across your lid and up into the crease. Now sweep the contour color underneath the lower lashline as well. You'll create a light-to-dark effect with the three eye shadows, with the darkest shade applied closest to the lashline and fading as you go towards the brow.
4. Eyeliner: Glide on along upper and lower lashline. Smudge with the midtone shade.
5. Mascara: Apply to several coats to upper lashes and lightly on lower lashes.

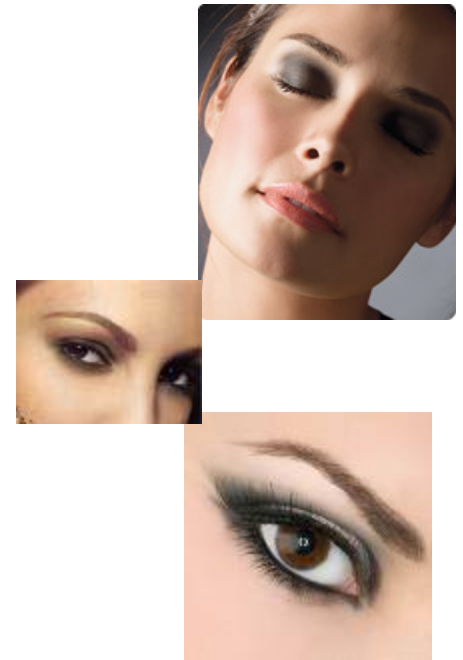


Created by Kellie Hammett, Ind. Sales Director

Smoky Eyes

Soft, smoky eyes look gorgeous against glowing, luminous skin and perfectly pouting lips. A great evening look that is best with a softer lip. Lip gloss really looks perfect with this eye look.

1. Highlighter shade: Apply to brow bone only.
2. Midtone shade: Start at the base of your upper lashline and bring the color up and over your entire lid - all the way up to your brow bone.
3. Accent shade: Again, start at the base of your lashline, layer the color over your midtone all the way across your lid and up into the crease. Now sweep the contour color underneath the lower lashline as well. You'll create a light-to-dark effect with the three eye shadows, with the darkest shade applied closest to the lashline and fading as you go towards the brow.
4. Eyeliner: Glide on along upper and lower lashline. Smudge with the midtone shade.
5. Mascara: Apply to several coats to upper lashes and lightly on lower lashes.



Created by Kellie Hammett, Ind. Sales Director