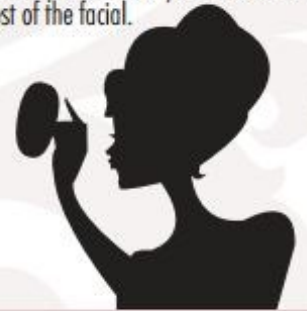


Instructions for TimeWise Repair™ Trial Facial



- 1 Using a small amount of cleanser (about the size of a pea) and water, create a rich lather and massage over face and neck. Rinse well with a warm wet wash cloth. Avoid eye area.
- 2 Draw an imaginary line down the center of your face. Smooth some of the Serum on only one side of your face & neck using an upward and outward motion. This will be your "pampered side" for the rest of the facial.
- 3 If you are doing this in the morning, apply day cream to "pampered side".
- 4 If you are doing this in the evening, apply the night cream to "pampered side".
- 5 On the "pampered side", pat eye cream around the eye area.
- 6 Compare sides.



Created by MKVirtualOffice.com

Instructions for TimeWise Repair™ Trial Facial



- 1 Using a small amount of cleanser (about the size of a pea) and water, create a rich lather and massage over face and neck. Rinse well with a warm wet wash cloth. Avoid eye area.
- 2 Draw an imaginary line down the center of your face. Smooth some of the Serum on only one side of your face & neck using an upward and outward motion. This will be your "pampered side" for the rest of the facial.
- 3 If you are doing this in the morning, apply day cream to "pampered side".
- 4 If you are doing this in the evening, apply the night cream to "pampered side".
- 5 On the "pampered side", pat eye cream around the eye area.
- 6 Compare sides.

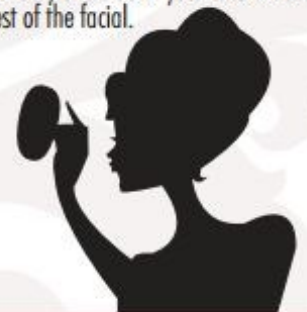


Created by MKVirtualOffice.com

Instructions for TimeWise Repair™ Trial Facial



- 1 Using a small amount of cleanser (about the size of a pea) and water, create a rich lather and massage over face and neck. Rinse well with a warm wet wash cloth. Avoid eye area.
- 2 Draw an imaginary line down the center of your face. Smooth some of the Serum on only one side of your face & neck using an upward and outward motion. This will be your "pampered side" for the rest of the facial.
- 3 If you are doing this in the morning, apply day cream to "pampered side".
- 4 If you are doing this in the evening, apply the night cream to "pampered side".
- 5 On the "pampered side", pat eye cream around the eye area.
- 6 Compare sides.



Created by MKVirtualOffice.com

Go Back in Time. And Lift Away the Years.
TimeWise Repair™ Volu-Firm Set

- Reduce the look of deep lines and wrinkles
- Restore lifted contours
- Recapture youthful volume.



40% Improvement in skin firmness.

58% improvement in skin elasticity.

7 out of 10 women showed signs of lifting along the jawline.

You Want Proof It Works?

TimeWise Repair is backed by the most comprehensive consumer and clinical testing of any new Mary Kay product to date.

Based on a 12-week clinical study, women using the TimeWise Repair regimen:

91% had less noticeable deep lines and wrinkles.

86% had skin that looked lifted.

98% had less under-eye puffiness.

93% had more even-toned skin.

93% had a significant improvement in overall appearance.

86% of women had a decrease in the appearance of average wrinkle length.

81% of women had a decrease in the appearance of average wrinkle width.

(name) _____

(phone) _____

(email) _____

(web) _____

Go Back in Time. And Lift Away the Years.
TimeWise Repair™ Volu-Firm Set

- Reduce the look of deep lines and wrinkles
- Restore lifted contours
- Recapture youthful volume.



40% Improvement in skin firmness.

58% improvement in skin elasticity.

7 out of 10 women showed signs of lifting along the jawline.

You Want Proof It Works?

TimeWise Repair is backed by the most comprehensive consumer and clinical testing of any new Mary Kay product to date.

Based on a 12-week clinical study, women using the TimeWise Repair regimen:

91% had less noticeable deep lines and wrinkles.

86% had skin that looked lifted.

98% had less under-eye puffiness.

93% had more even-toned skin.

93% had a significant improvement in overall appearance.

86% of women had a decrease in the appearance of average wrinkle length.

81% of women had a decrease in the appearance of average wrinkle width.

(name) _____

(phone) _____

(email) _____

(web) _____

Go Back in Time. And Lift Away the Years.
TimeWise Repair™ Volu-Firm Set

- Reduce the look of deep lines and wrinkles
- Restore lifted contours
- Recapture youthful volume.



40% Improvement in skin firmness.

58% improvement in skin elasticity.

7 out of 10 women showed signs of lifting along the jawline.

You Want Proof It Works?

TimeWise Repair is backed by the most comprehensive consumer and clinical testing of any new Mary Kay product to date.

Based on a 12-week clinical study, women using the TimeWise Repair regimen:

91% had less noticeable deep lines and wrinkles.

86% had skin that looked lifted.

98% had less under-eye puffiness.

93% had more even-toned skin.

93% had a significant improvement in overall appearance.

86% of women had a decrease in the appearance of average wrinkle length.

81% of women had a decrease in the appearance of average wrinkle width.

(name) _____

(phone) _____

(email) _____

(web) _____