



Recommended Lipsticks for Skin Tones

Ivory 1, 2, 3, 4, 6 TimeWise Liquid Foundations; Ivory 100, 104, 105 Medium Coverage;
Ivory .5 and Ivory 1 Mineral Powder Foundation



Pink Satin



Sunny Citrus*



Sunset



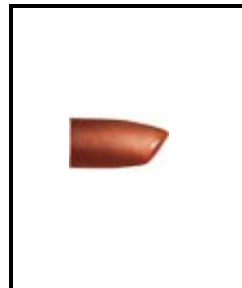
Hibiscus



Red



Shell*



Toffee



Pink Passion



Apricot Glaze



Dusty Rose



Icy Peach*



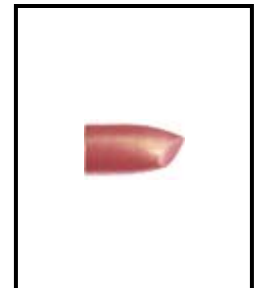
Frosted Rose



Whipped Berries



Berry Kiss



Sweet Nectar



Black Cherry



Apple Berry



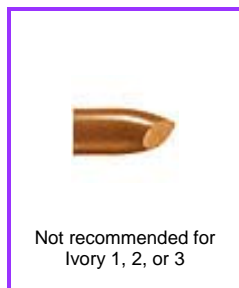
Boysenberry



Sheer Blush



Pink Shimmer



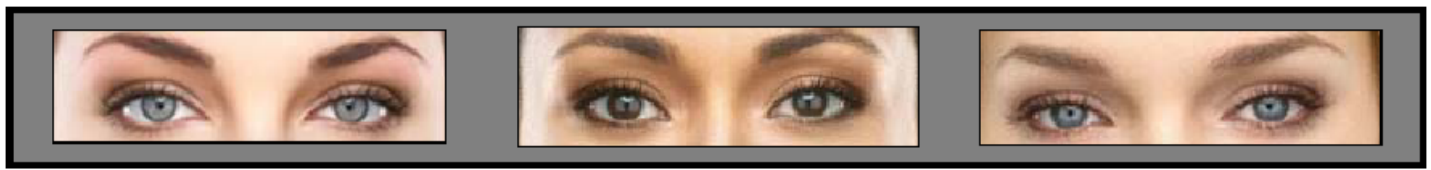
Not recommended for
Ivory 1, 2, or 3

Sunlit Sand

Lipstick Intensity

- Bright
- Deep
- Neutral
- Layering

* Shades without shimmer or pearl



Recommended Lipsticks for Skin Tones

Ivory 5, 7 and Beige 5 TimeWise Liquid Foundations; Ivory 200, 204, 205 Medium Coverage;
Ivory 2 Mineral Powder Foundation



Pink Satin



Sunny Citrus*



Sunset



Hibiscus



Red



Apricot Glaze



Icy Peach*



Pink Passion



Sweet Nectar



Dusty Rose



Not recommended for Ivory 7

Raisinberry



Frosted Rose



Whipped Berries



Shell*



Whisper*



Toffee



Apple Berry



Berry Kiss



Boysenberry



Not recommended for Ivory 7

Blaze*



Black Cherry



Pink Shimmer



Sunlit Sand

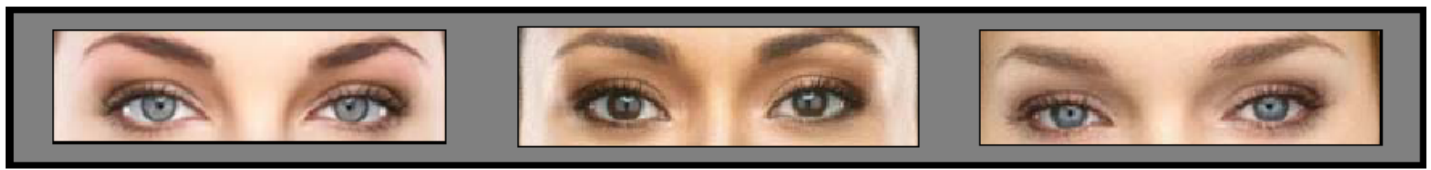


Sheer Blush

Lipstick Intensity

- Bright
- Deep
- Neutral
- Layering

* Shades without shimmer or pearl



Recommended Lipsticks for Skin Tones

Beige 1, 3, 6 TimeWise Liquid Foundations; Ivory 300, 304, 305 Medium Coverage;
Ivory 2, Beige .5 and Beige 1 Mineral Powder Foundation



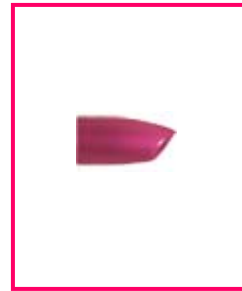
Pink Satin



Sunny Citrus*



Sunset



Hibiscus



Red



Shell*



Icy Peach*



Pink Passion



Sweet Nectar



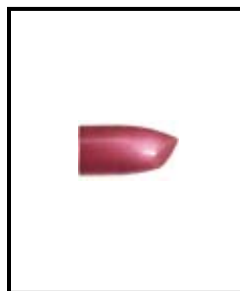
Dusty Rose



Apricot Glaze



Frosted Rose



Whipped Berries



Not recommended for
Beige 305.

Whisper*



Berry Kiss



Toffee



Raisinberry



Apple Berry



Boysenberry



Recommended only for
Beige 6.

Midnight Red*



Black Cherry



Not recommended for
Beige 3.

Blaze*



Sunlit Sand



Sheer Blush



Pink Shimmer



Recommended Lipsticks for Skin Tones

Beige 2, 4, 7, 8 TimeWise Liquid Foundations; Bronze 400, 402, 404 Medium Coverage;
Beige .5, 1, 1.5, 2 Mineral Powder Foundation



Pink Satin



Sunny Citrus*



Sunset



Hibiscus



Red



Apricot Glaze



Raisinberry



Pink Passion



Whisper*



Dusty Rose



Shell*



Frosted Rose



Whipped Berries



Icy Peach*



Sweet Nectar



Toffee



Blaze*



Black Cherry



Berry Kiss



Apple Berry



Boysenberry



Pink Shimmer



Sunlit Sand

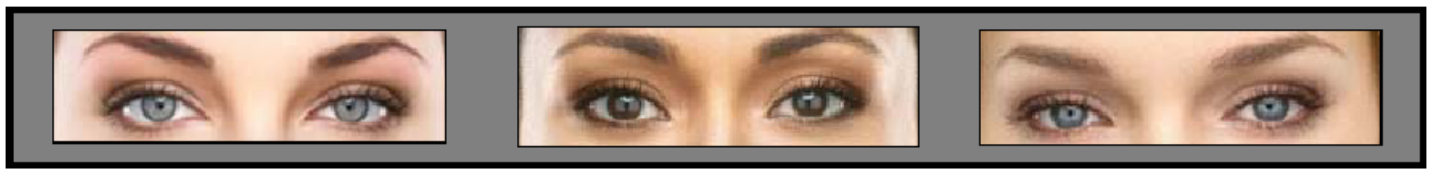


Sheer Blush



Mocha Freeze

Copper Star, a neutral color, and Amber Glow, a layering shade, are only recommended for Beige 2 and 7.
Merlot, Gingerbread, Amber Suede, Maple, and Midnight Red, all deep colors, are recommended only for Beige 7.



Recommended Lipsticks for Skin Tones

Bronze 1, 2, 3, 4 TimeWise Liquid Foundations; Bronze 500, 504, 507 Medium Coverage;
Bronze 1, 2, 3 Mineral Powder Foundation



Sunny Citrus*



Sunset



Hibiscus



Red



Not recommended for
Bronze 3 or 4.

Icy Peach



Not recommended for
Bronze 3 or 4.

Whisper*



Not recommended for
Bronze 3 or 4.

Toffee



Not recommended for
Bronze 3 or 4.

Pink Passion



Raisinberry



Copper Star



Gingerbread



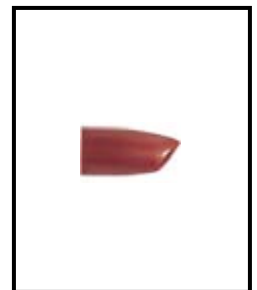
Maple*



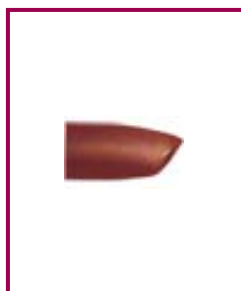
Whipped Berries



Berry Kiss*



Downtown Brown



Bronzed



Nutmeg



Apple Berry



Amber Suede



Blaze*



Midnight Red*



Boysenberry



Black Cherry



Hot Mocha*



Sweet Nectar

Amber Glow, Sunlit Sand, and Mocha Freeze, all layering shades, are also recommended for all skin tones.



Recommended Lipsticks for Skin Tones

Bronze 5, 6, 7, 8 TimeWise Liquid Foundations; Bronze 600, 607, 708, 808 Medium Coverage;
Bronze 3, 4, 5 Mineral Powder Foundation



Sunny Citrus*



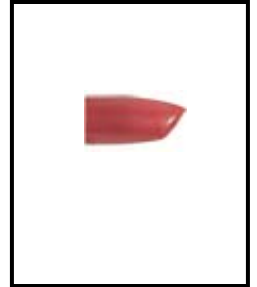
Hibiscus



Red



Whipped Berries



Gingerbread



Downtown Brown



Hot Mocha*



Bronzed



Nutmeg



Copper Star



Raisinberry



Maple*



Rich Fig



Berry Kiss



Apple Berry



Black Cherry



Boysenberry



Blaze*



Amber Suede



Midnight Red*

Lipstick Intensity

- Bright
- Deep
- Neutral
- Layering



Mocha Freeze

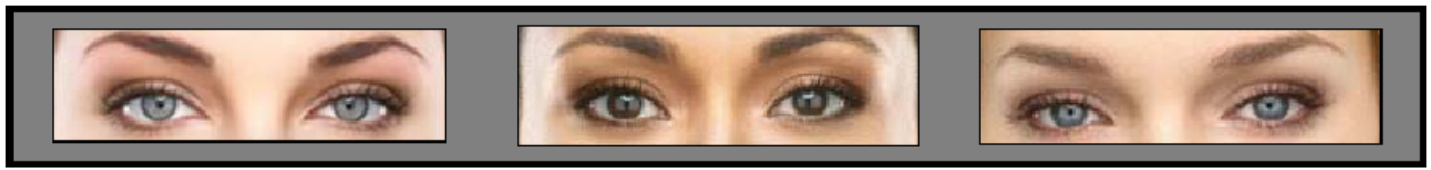


Amber Glow



Sunlit Sand

* Shades without shimmer or pearl



Mary Kay NouriShine Lip Gloss



Au Naturel



Beach Bronze



Berry Tart



Café au Lait



Cream and Sugar



Fancy Nancy



Mango Tango



Icicle



Pink Luster



Pink Parfait



Pink Sateen



Red Passion

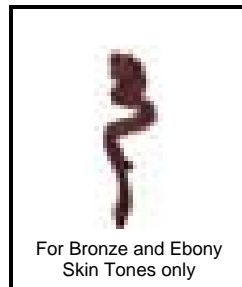


Rich Spice

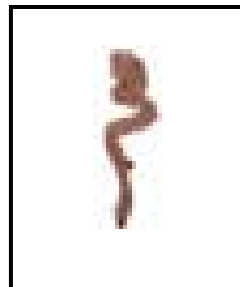


Rock 'n' Red

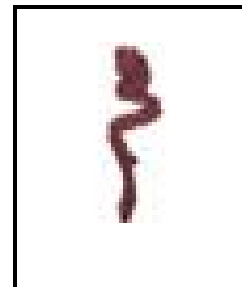
Lip Liners



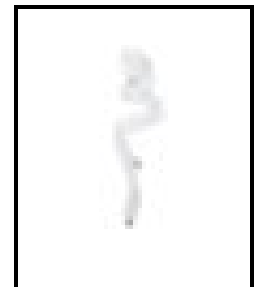
Cappuccino



Caramel



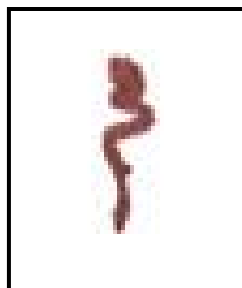
Chocolate



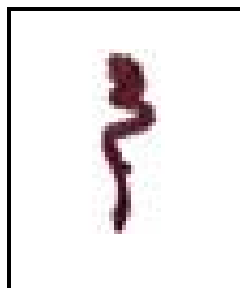
Clear



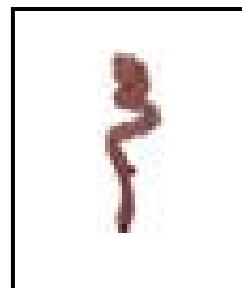
Dark Chocolate



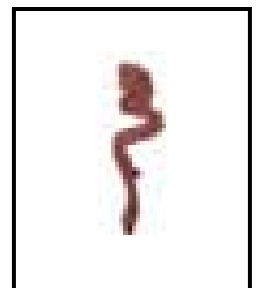
Neutral



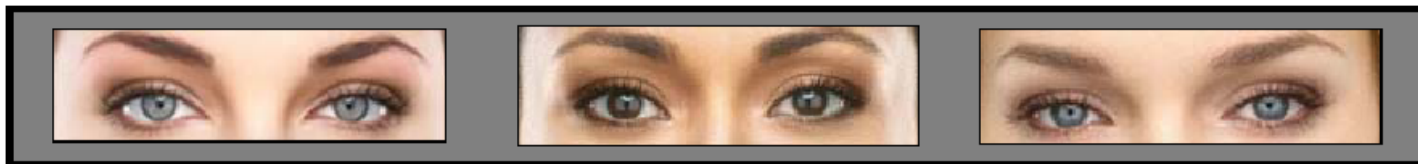
Plum



Soft Blush



Spiced Tea



Mary Kay Tinted Lip Balm SPF 15



Rose*



Poppy*



Natural*



Apricot*



Blush*

* Shades without shimmer or pearl

Mary Kay Liquid Lip Color



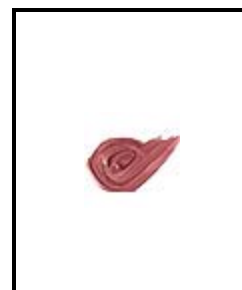
Cherry Coffee



Chocoholic



Malted



Raspberry Ice



Sherbet



Royal Plum