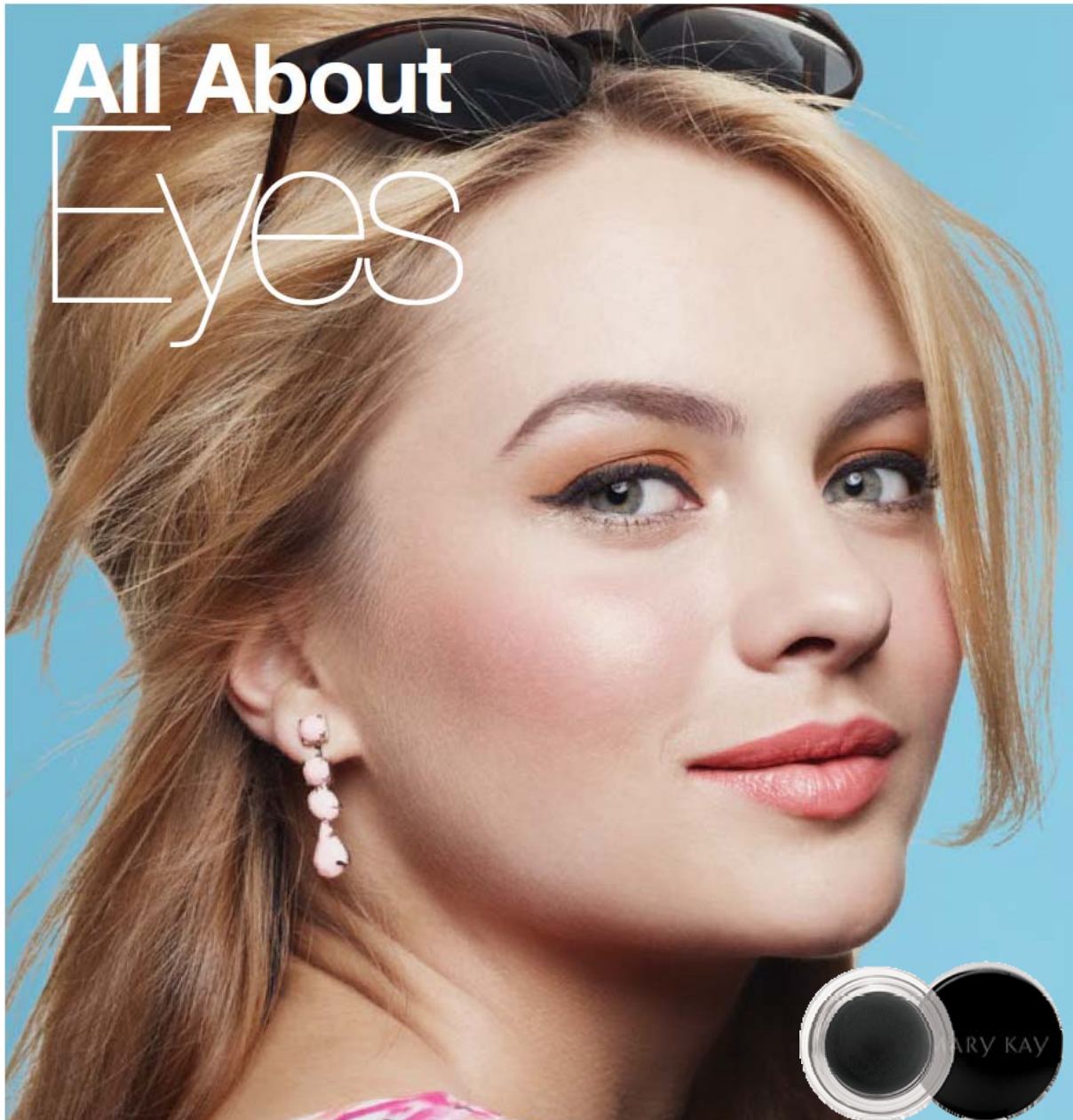


# All About Eyes



- *Apply Copper Glow on bottom lid to crease*
- *Apply Gold Coast on upper lid and blend down to crease*
- *Apply new Black Gel Eyeliner on top lid and sweep up*
- *Black Mascara*
- *Blend Strawberry Cream Mineral cheek color*
- *Finish Color Me coral Mary Kay True Dimension Lipstick*



## The Spring Party Look

- Sweep Gold Coast mineral eye color all over eyelids and up to brow bones.
- Brush Iris mineral eye color into creases and along lower lashlines.
- Line lashlines with NEW Mary Kay® Gel Eyeliner With Expandable Brush Applicator in Jet Black, creating a “wing” at the outer corners
- Dust Cinnamon Stick mineral cheek color across upper cheekbones into the hairline.
- Brush on Mary Kay® Ultimate Mascara™ in Black, accentuating with extra mascara at the outer corners
- Line lips with Neutral lip liner and blend.
- Apply Toffee creme lipstick,
- Top with Cream and Sugar lip gloss.



# Welcome Spring



- *Apply the brown shade from the NEW limited-edition† Stonewashed eye duo into the inner corners.*
- *Smudge the blue shade onto eyelids and blend up to creases, then use it to line the lower lashlines*
- *Apply NEW Mary Kay® Gel Eyeliner With Expandable Brush Applicator in Jet Black along the upper lashlines, creating a "wing" at the outer corners.*
- *Using NEW Mary Kay® Bronzing Powder, apply the Medium-Dark shade, brushing in a '3' shape from the temples to the cheekbones to the jaw.*
- *Then, dust Sparkling Cider mineral cheek color onto the apples of the cheeks.*
- *Apply Toffee creme lipstick, then top with Café au Lait lip gloss*
- *Apply Black mascara*



## Sunset Sweetheart

- Apply the yellow shade from the NEW limited edition Summer Sunset Springy Eye Duo across the eyelids and the into the inner corners.
- Apply the bronze shade from crease to brow bones.
- Use the NEW Mary Kay Gel Eyeliner in the Jet Black to recreate her classic winged cat eye.
- Apply in Black Mascara
- Apply Sparkling cider Mineral cheek color
- Clear Lip liner
- Apply Lip Gel in Cherry Twist part of the new Limited edition





# SPIN

- *Electric Spring Baked Eye Trio*
- *Teal Me MORE Eye Crayon*
- *Black Mascara*
- *Cherry Blossom*
- *Purple Punch Lip Crayon*
- *Violet Vixen Jelly Lip Gloss*





## Weekend With Friends

- *Brush Hazelnut mineral eye color onto eyelids.*
- *Smudge Cinnabar mineral eye color along upper lashlines.*
- *Line upper lashlines with Espresso mineral eye color.*
- *Dust Sparkling Cider mineral cheek color across upper cheekbones into hairline*
- *Brush upper and lower lashes with Mary Kay® Lash Love® Mascara in I Black.*
- *Line lips with Clear lip liner,*
- *Apply Sunny Citrus creme lipstick all over.*



## Spring Vacation

- *Glide Apricot Twist cream eye color all over lids and up to the brow bones.*
- *Brush Iced Cocoa cream eye color onto the outer corners and along the lashlines.*
- *Apply Black eyeliner to upper and lower lashlines,*
- *then brush on Mary Kay® Ultimate Mascara™ in Black to upper and lower lashes.*
- *Using NEW Mary Kay® Bronzing Powder, apply the Medium-Dark shade, brushing in a '3' shape from the temples to the cheekbones to the jaw.*
- *Citrus Bloom Mineral Cheek Color*
- *Apply Natural Beauté True Dimensions™ lipstick,*
- *Top with Pink Luster lip gloss.*





## Mothers Day Look

- *Brush Honey Spice mineral eye color into the inner corners of the eyes and below the brow bones.*
- *Glide Silky Caramel mineral eye color all over lids.*
- *Apply Sienna mineral eye color on the outer corners of the eyes and along the lower lashlines.*
- *Line upper lashlines with Black eyeliner,*
- *then soften with Coal mineral eye color.*
- *Dust Sparkling Cider mineral cheek color onto the apples of the cheeks and blend toward the hairline.*
- *Line lips with Soft Blush lip liner.*
- *Apply Icy Peach creme lipstick,*
- *Top with Fancy Nancy lip gloss.*
- *Black Mascara*