



Step into Romance

Try Dreamy Eye Effects.

Iridescent cream colors add a shimmery pop to the inner corners of eyes. Mauve and lavender shades act as feminine neutrals applied over entire eyelid. Metallic neutrals add color depth when concentrated in eye creases. Deep neutral eye colors can be used instead of traditional eyeliner to create a soft, diffused finish.

- GRANITE**
mineral eye color
- LAVENDER FOG**
mineral eye color
- TRUFFLE**
mineral eye color and
- VIOLET INK**
eyeliner
- CRYSTALLINE**
mineral eye color



Get a Natural Glow.

Swirl a cool cheek color, like Strawberry Cream mineral cheek color, across the apples of cheeks.



Layer Lips With Pink.

Use Soft Blush lip liner to outline and fill in lips to create a base. Apply Pink Passion creme lipstick and Pink Parfait lip gloss.





Golden Glamour

- *Apply Honey Spice mineral eye color all over lids and up to brow bones.*
- *Blend Amber Blaze mineral eye color and Copper Glow mineral eye color into creases.*
- *Sweep Gold Coast mineral eye color under brow bones to highlight.*
- *Line eyes with Black eyeliner. Extend line up and out for a winged effect.*
- *For added drama, try Black liquid eyeliner.*
- *Sweep on several coats of Mary Kay® Lash Love® Mascara in I ♥ Black*
- *Sweep Citrus Bloom mineral cheek color onto the apples of the cheeks.*
- *Line lips with Neutral lip liner.*
- *Apply Mary Kay® True Dimensions™ Lipstick in Firecracker, building up color until desired intensity is reached, blotting after each application*



Wonder into Enchantment



Reinvent the Smoky Eye.

Shimmery gold eye colors create an eye-popping effect when applied as a base for eye color. Create unique color depth and allure by blending two shades of plum eye color into eye creases and along lower lashlines. For ultimate smoky effects, use the [Mary Kay® Eye Smudger Brush](#).



HONEY SPICE
mineral eye color

SWEET PLUM
mineral eye color

IRIS
mineral eye color

Get an Alluring Blush.

Dust a subtle, pink cheek color, like [Shy Blush mineral cheek color](#), just to the apples of cheeks.



Seduce With Stained Lips.

Apply a berry lipstick, like [Berry Kiss creme lipstick](#). Blot with a tissue and reapply. Finish with a shimmery golden lip gloss, like [Cream and Sugar lip gloss](#).



Autumn Allure

- Dust Honey Spice mineral eye color all over the eyelids.
- Apply Sweet Plum mineral eye color across eyelids and into the creases, then blend along upper lashlines and into outer corners of the eyes, continuing under the lower lashlines.
- Add a touch of Amber Blaze mineral eye color at the centers of the lower lashlines.
- Apply several coats of Mary Kay® Lash Love® Mascara in I ♥ Black.
- Using a circular motion, sweep Sunny Spice mineral cheek color onto the apples of the cheeks
- Line lips with Plum lip liner.
- Apply Whipped Berries creme lipstick,
- Beach Bronze lip gloss on top.



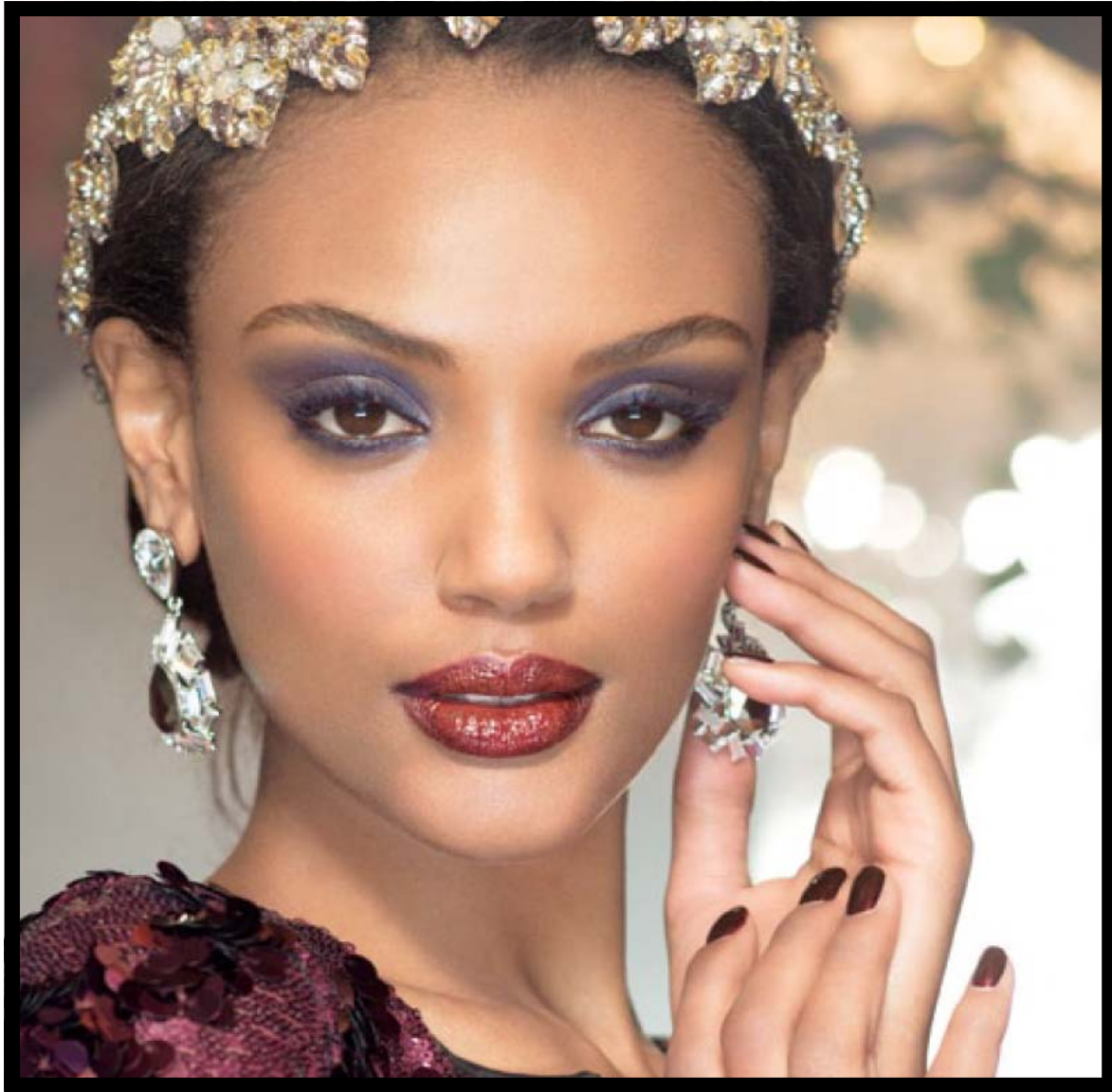
Evening Mystery Look

- Apply Beach Blonde cream eye color all over eye areas.
- Dust Coal mineral eye color onto lids and into creases.
- Brush Midnight Star mineral eye color along lower lashlines
- Line upper lashlines with Black eyeliner. Sweep on several coats of Mary Kay® Ultimate Mascara™ in Black.
- Using a circular motion, apply Golden Copper mineral cheek color to apples of the cheeks
- Line lips with Plum lip liner.
- Apply Mary Kay® True Dimensions™ Lipstick in Sizzling Red.
- Highlight centers of upper and lower lips with Red Passion lip gloss.



Timeless Elegance

- Apply Spun Silk mineral eye color all over eye areas, then sweep Granite mineral eye color into the creases and along the lower lashlines.
- Line top lashlines with Bronze eyeliner.
- Sweep on Mary Kay® Lash Love® Mascara in I ♥ Brown.
- Apply Sunny Spice mineral cheek color to the apples of the cheeks.
- Line lips with Neutral lip liner.
- Apply Mary Kay® True Dimensions™ Lipstick in Pink Chérie



Smoky Fantasy Eyes

- Apply Mary Kay® Mineral Eye Color in Honey Spice from lashlines to brows. Then apply Mary Kay® Mineral Eye Color in Iris on the eyelids up to the eye creases and also under the lower lashes. Brush Mary Kay® Mineral Eye Color in Coal on the outer creases of the eyes and blend
- Apply NEW limited-edition† Mary Kay® Smoke & Shimmer Eye Wand in Amethyst Smoke from the top lashlines to above the creases, coloring to the outer corners. Blend well.
- Line eyes with Black eyeliner. Sweep on Mary Kay® Lash Love® Mascara in I ♥ black.
- Apply Dark Cherry mineral cheek color over Cherry Blossom mineral cheek color for a striking effect.
- Line lips with Chocolate lip liner. Then apply NEW limited-edition† Mary Kay® Glossy Lip Stain in Mulberry Forest.