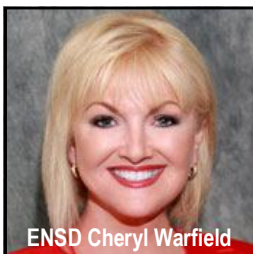
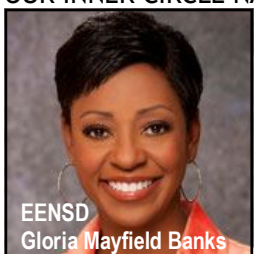


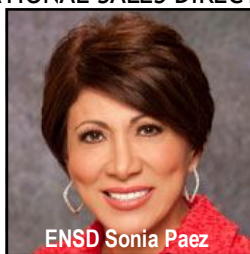
Hosted by
ENSD Cheryl
Warfield



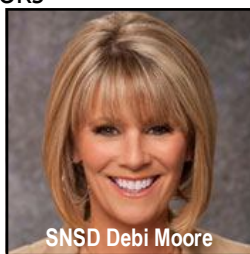
ENSD Cheryl Warfield



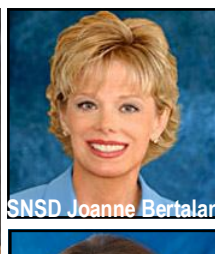
EENS Gloria Mayfield Banks



ENSD Sonia Paez



SNSD Debi Moore



SNSD Joanne Bertalan



NSD Morayma Rosas



NSD Beth Piland



NSD Andrea Newman



NSD Maureen Myers



NSD Sabrina Goodwin Monday



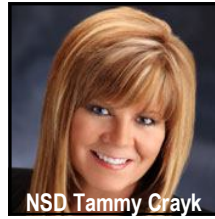
NSD Diane Mentiply



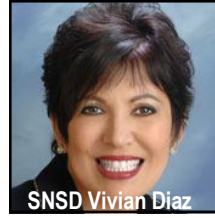
NSD Roxanne McInroe



SNSD Suzanne Brothers



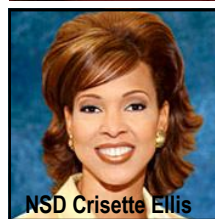
NSD Tammy Crayk



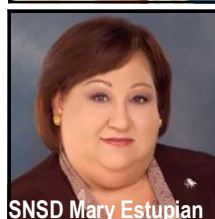
SNSD Vivian Diaz



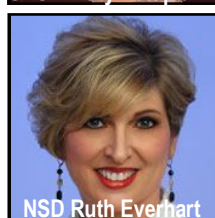
SNSD Evelinda Diaz



NSD Crisette Ellis



SNSD Mary Estupian



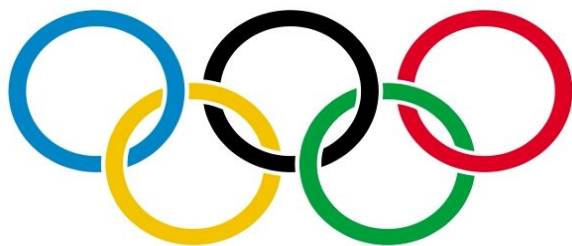
NSD Ruth Everhart

COME ABOARD OUR GOLD MEDAL CRUISE!

For Consultants & Directors

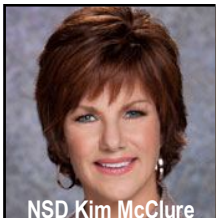
Contest dates to earn Gold Medals:
January 2014 - June 2014

- **Be a Gold Medal Winner and you get to join us on the Mary Kay GOLD MEDAL cruise!**
- **Get 2 Gold Medals and you can bring your family & spouse/spice!**
- **Get 3 Gold Medals and you can join the NSDs for a special luncheon on the cruise!**
- **Get 4 Gold Medals and you get to have a special dinner at the Captain's Table!**



Featuring 25 NSDs!

Prices, Dates of Cruise & Details are on back of flier



NSD Kim McClure



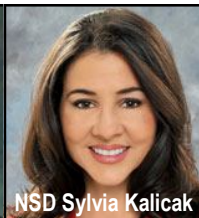
NSD Cathy Littlejohn



NSD Maureen Ledda



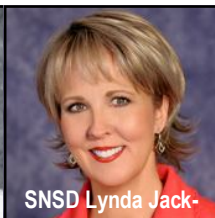
NSD Connie Kittson



NSD Sylvia Kalicak



NSD Cecilia James



SNSD Lynda Jack-



*Royal Caribbean's
Enchantment of the Seas*

Among some of the standout innovations brought on board are an expanded pool deck that juts out over the ocean, 151 additional staterooms, four bungee trampolines, two suspension bridges topped by awe-inspiring arches, and an incredible interactive Splash Deck for kids. Ship updated in 2005



Don't forget-you will need your Passport!

There are 61 shore excursions to choose from in Nassau, Co-coCay (Royal Caribbean's private island) and Port Canaveral.



Please remember you have up to 4 days prior to your sail date to purchase your Royal Caribbean International Shore Excursions online. If you are within the 4 days, you will then need to purchase your Shore Excursions on board; land excursions would need to be purchased directly through your tour director on the land portion of your Cruise Tour. Also, be sure to sign up for the **Crown & Anchor Society** through their website. Membership entitles you to many exclusive benefits - from special savings on cruise vacations to exciting onboard offers on spa services, casino visits, and much more. Our members get extra amenities, cruise planning benefits and onboard events. Plus, the more you cruise, the more benefits you'll receive.

September 5-8, 2014

From Port Canaveral, FL to Nassau & Cococay, Bahamas!

4 Days—3 Nights

Consultants & Directors may attend with a Personal Gold Medal Jan—June 2014

<u>Room Category</u> <i>(based on double occupancy)</i>	<u>Group Fare</u> <i>(per person- includes Taxes & Port Fees)</i>	<u>Gratuities</u>	<u>Insurance</u> <i>(optional)</i>	<u>Total per person</u>
Junior Suite	\$622.63	\$36	\$59	\$717.63
OV Balcony (D2)	\$452.63	\$36	\$29	\$517.63
Ocean View (H)	\$382.63	\$36	\$29	\$447.63
Interior	\$372.63	\$36	\$29	\$437.63



Register for the Gold Medal Cruise through:

Gloucester Travel & Cruise

Bob Booth is our Travel Agent

856-742-8010

www.gloucestertravel.com/groups

Look for Mary Kay—Gold Medal Cruise