

find your **kiss personality**

with Maxine Albert

handles with care

dominant upper lip with turned down corners



- You are highly intuitive and sensitive with a sharp, incisive mind
- You know how to enjoy life but are careful to set strong personal boundaries
- Spice and imagination thrill you romantically

livin' out loud

open and full bodied



- You are a leader with strong convictions and tremendous inner resolve
- You don't censor words, are lively and imaginative and can be prone to drifting
- You're fun loving, value your space and like to take charge

expressionista

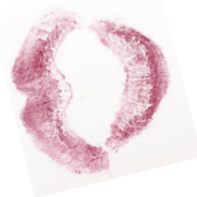
full bodied and luscious



- You are imaginative, outspoken and highly adventurous
- You have a lusty appetite for life and a sensuous nature, but self-discipline is not your strong suit
- You are expressive with a generous temperament and passionate about your work and the things you believe in

passion forward

heart-shaped with a defined upper lip



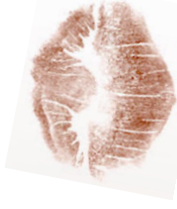
- You're a keen observer of life and love to express yourself creatively
- You love stirring up things and challenging convention
- You're spiritual, impulsive and very likeable

To find out what your lips say:

1. Pucker up and kiss your piece of paper while wearing your favorite Mary Kay® Crème Lipstick.
2. Compare your lip print with the ones you see here and find the one that most closely matches yours.

divine diva

pretty pout with a full lower lip



- You relish the spotlight and know just how to flatter people
- You are competitive and love to win
- You're vivacious, driven and used to achieving your goals

hippie chic

balanced with a defined upper lip



- You possess a sharp mind, a winning disposition and have a great allure and style
- You are a lover of art and all things cultural and also have a deep appreciation for nature
- You value the importance of cultivating your mind, as well as your body

So you-nique

butterfly shape, with the corners turned upwards and a well-defined upper lip



- You are friendly and outgoing
- You dream big and play big and love to inspire others to shoot for the stars
- You are a true individual, a free spirit who makes the rules up as you go

lucky charmer

cupid's bow shape with a defined lower lip



- You have a playful manner that is always engaging and fun
- Your childlike nature can be sweet and charming, but sometimes gets in the way
- You are great at the art of giving and receiving love

opti-mystique

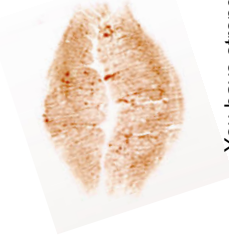
"angel" lips with corners turned upwards and curvy



- Your smile is contagious; you have that special "glow"
- You are confident and highly optimistic
- You're witty and very aware of your feminine mystique

glow girl

compact and curvy



- You have strong opinions and like to be in control
- You are slow to show emotions and are loyal to a trusted few; you don't like to be crowded in
- You are determined and decisive; others find you mysterious and sexy