

How to Put Together your **GLAMOUR KIT**



The Organizer Caddy & Quilted Cosmetic Bag Trio can both be found under Section 2 of your Ordering page.

OR



Go to marykayintouch.com and select ordering, online ordering, create a new cosmetic order, selling tools/customer gifts, customer gifts, and then you can add the Quilted Cosmetic Bag Trio to your order.

The Quilted Cosmetic Bag and the Organizer Caddy are perfect carrying cases for all of your MK mineral products. Like a professional make up artist, you'll be able to easily grab one of these bags and be ready for guests you bring to glamour events and to do your own glamour appointments.

FILL YOUR GLAMOUR KIT WITH ONLY ONE \$244 SECTION 1 WHOLESALE ORDER

Retail Total: \$487.40 | Total Section 1 & Section 2 Wholesale Cost \$266

SECTION 2 ITEMS:

- Organizer Caddy - #054288 - \$15
- Quilted Cosmetic Bag Trio - #020752 - \$13
- (3) Cosmetic Display Trays - #017364 - \$3 each

SECTION 1 ITEMS:

- (31) Mineral Eye Colors - \$6.50 each
 - (10) Mineral Cheek Colors - \$10 each
 - (2) Mineral Bronzing Powders - \$12 each
Matte Shades: Sandstone and Bronze Diva
 - (6) Sheer Mineral Pressed Powders - \$16 each
 - (1) Unfilled Black Compact - \$18 each
 - (1) Mary Kay Professional Brush Set - \$48
- Foundations Included In Your Starter Kit



ADDITIONAL ITEMS TO KEEP IN YOUR BRUSH SET:

- (1) Black Ultimate and/or Lash Love Mascara - \$15 each
- Concealers - \$10 each
- Facial Highlighting Pen - \$18 each
- Eyeliners - \$12 each
(Suggested Colors: Violet Ink, Rich Jade, Deep Brown, & Dark Demim or Steely)
- Lip Liners - \$12 each
(Suggested Colors: Clear, Neutral, Spiced Tea, Soft Blush, Chocolate, & Cappuccino)
- Eyebrow Pencils - \$10 each
(Suggested Colors: Classic Blonde and Brunette)
- NouriShine Plus Lip Glosses - \$14 each
- Creme Lipsticks - \$13 each
- (1) Pack Disposable Spatulas - #400700 - \$1
- Disposable Mascara Wands - #003370- \$1.50
- Lipstick Caddy - #017283- \$3

OPTIONAL ITEMS:

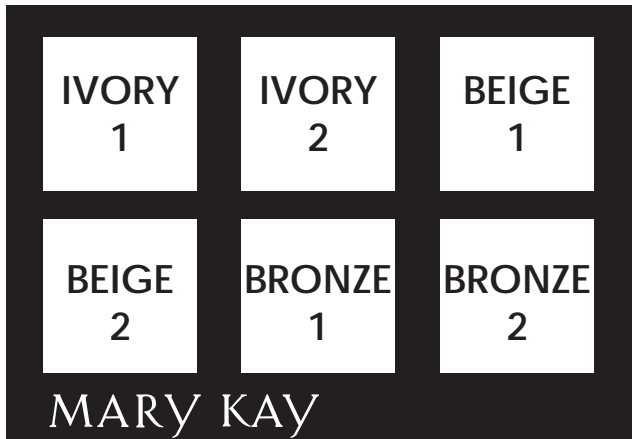
- (2) Mineral Highlighting Powders - \$12 each
- Brow Gel - \$10



How to Put Together your **GLAMOUR KIT**

If you are using the **Quilted Cosmetic Bag**: Remove the mesh velcro pouch and the other 2 cosmetic bags from the Black Quilted Bag. Fill your display trays with your Mineral Eye Colors, Cheek Colors, and Pressed Powders, then put flat inside quilted bag. Place your Brush Set on top of the Display trays. Store your Mineral Powder Foundations, Mineral Powder Brushes and Compact in the mesh zipper section of the bag.

If you are using the **Organizing Caddy**: Arrange the velcro tabs to create 3 separate sections within the caddy. Put all of your Demo Trays in one section of the caddy and your filled brush set in another section. Then, place your Mineral Powder Foundations (standing up) in the third section. Your compact and other demo products/applicators can be placed in the outside pockets or in the mesh zipper bags from your starter kit.



Display Tray #1: Sheer Mineral Pressed Powders



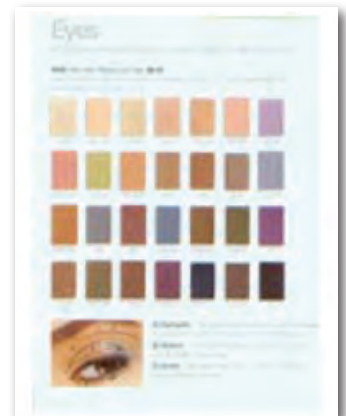
Display Tray #2: Mineral Cheek Colors

Cut out and laminate the Look Book Page showing all Mineral Cheek Colors (pictured right). Colors are displayed in alphabetical order, so you know the names of each. Two matte bronzing powders are in the top right box.



Display Tray #3: Mineral Eye Colors

Cut out and laminate the Look Book page showing all Mineral Eye Colors (pictured right). Colors are displayed in order shown in the picture, so you know the names of each.



You can also print the Mary Kay Color Shade Chart from the FedEx Doc Store through marykayintouch.com

Professional Brush Set and Zipper Pouches: Include all other glamour items in the zipper section of the Brush Set (concealers, facial highlighting pen, eyeliners, mascara, eyebrow pencils, etc.) Applicators and Mascara Wands can fit in the middle section of the brush set and all lip products can be stored in one of the cosmetic bags that came with the Quilted Trio and then displayed in the Lipstick Caddy at your appointments.