

**IMAGINE  
YOURSELF  
SIX MONTHS  
FROM NOW**

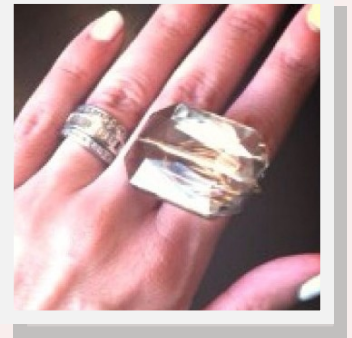
**DON'T STOP  
IT WILL BE WORTH IT**



- 30 PERSONAL FACES \_\_\_\_\_ 50 PTS
- 45 PERSONAL FACES \_\_\_\_\_ 100 PTS
- 50 PTS FOR EVERY EVENT HELD OUTSIDE OF SUCCESS NIGHT WITH 3 GUESTS PRESENT (debut, any type party, career coffee, t.a.c.o. night, muffins and mktg. etc.....)

- EVERY 5 PERSONAL INTERVIEWS \_\_\_\_\_ 100 PTS (over 18)
- EVERY 5 UNIT INTERVIEWS \_\_\_\_\_ 50 PTS
- UNIT RECRUITS \_\_\_\_\_ 75 PTS
- UNIT QUALIFIED RECRUIT \_\_\_\_\_ 100 PTS
- 10 RECRUITS IN MONTH (UNDER 75)/OVER 75 15 RECRUITS \_\_\_\_\_ 200 PTS

**Top 5 earn MIRACLE RING**



- PERSONAL QUALIFIED RECRUIT \_\_\_\_\_ 500 PTS
- EACH NEW RED JACKET \_\_\_\_\_ (100 pts)
- NEW DIQ 100 PTS \_\_\_\_\_ 2 NEW DIQ'S \_\_\_\_\_ 500 PTS
- 200 PTS FOR BEST MONTH EVER
- 100 PTS FOR BRONZE MEDAL/300 SILVER/500 GOLD \_\_\_\_\_
- 50 PTS FOR ATTENDING DIRECTORS MEETING
- 50 PTS FOR READING "CRASH THE CHATTERBOX" AND SENDING ME TOP 10 HIGHLIGHTS

**ALL NEW DIRECTORS EARN  
MATCHING BRACELET  
WHEN "ON THE MOVE" IS  
ACHIEVED AND #1 AND #2  
PACESETTER DIRECTOR!**

**TOTAL POINTS JUNE / JULY / AUGUST**

\_\_\_\_\_

**SHEET MUST BE TURNED IN BY THE 5TH OF EVERY MONTH TO BE IN CONTEST**